



INSIDE

Welcome ETAPS 2024

Welcome note for newcomers!

Greetings to all attendees of ETAPS 2024, and a warm welcome to Luxembourg! After an eventful weekend packed with enriching workshops, it's time to transition to the main event. To our newcomers, we extend our sincere delight in having you join us. As you delve into the dynamic ambiance of Luxembourg City, we anticipate that this gathering will ignite engaging discussions, forge valuable collaborations, and create lasting memories. We eagerly anticipate the inspiring and productive days that lie ahead. Welcome, and let the journey begin!

Useful information

Wi-Fi, programmes,
transportation, and
contact

Weather forecast and welcome reception



Useful information

Wi-Fi: Each room at the venue will have its own Wi-Fi with the name being the room name and the password: "room-name"-1453 (e.g. Europe-1453, Vianden-1453). There will also be a sign in each room with the Wi-Fi name and password.

ETAPS Program for Monday: You can find the program here
<https://etaps.org/2024/programme/programme-monday/>

ETAPS Monday program



Transportation: Public transportation in Luxembourg is free, please check out www.mobiliteit.lu for schedules.

IOS



Android

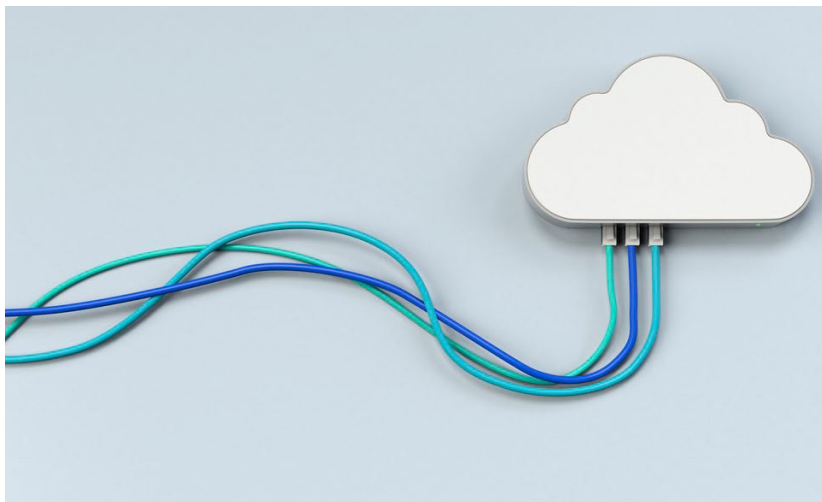


Website



Contact: If you have any further questions or administrative requests, please feel free to contact us at etaps2024@uni.lu








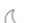


Venue floor plan

You can find conference floor plan on the following link:



Forecast

After weeks of rain, the Sun is back in Luxembourg . Watch out be some showers on Tuesday!

TODAY 08/04	 22° 10°	A morning shower; some sun  Night: Cloudy, showers around late	📶 49%
TUE 09/04	 12° 4°	Cooler with rain and drizzle  Clear	📶 84%
WED 10/04	 15° 3°	Partly sunny  Mainly clear	📶 1%



Welcome Reception

Today, from 6:00 PM to 10:00 PM, we're delighted to invite you on a city tour followed by a casual gathering with light refreshments at the Big Beer Company in Clausen. Enjoy complimentary drinks between 7:30 PM and 9:30 PM! Departure buses will be available at 6:00 PM from Parc Alvisse, with return services scheduled at 9:15 PM, 9:30 PM, and two additional buses at 9:45 PM. Join us for an evening of exploration and relaxation!